

KORKMAZ industry

KORKMAZ PANEL



**COLD ROOM
SYSTEMS**

WE ARE EVERYWHERE IN THE WORLD

FOR THOSE WHO PREFER QUALITY

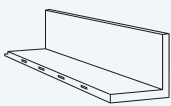


CONTENTS

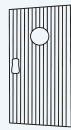
PRODUCTION AND SHIPPING AREA	08-09
INDUSTRIAL COLD ROOM PANEL	10-15
COLD ROOM DOORS	16-23
MODULAR COLD ROOMS AND CABINETS	24-27
INDUSTRIAL COOLING UNITS	28-35
INDUSTRIAL STAINLESS STEEL COUNTERS	36-40
HUMIDIFICATION - PVC CURTAIN	41
ACCESSORIES	42-44
CERTIFICATES	46-47
REFERENCES	48-49
OUR PROJECTS	50



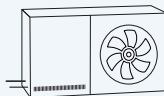
KORKMAZ PANEL
WITH OVER 30 YEARS OF EXPERIENCE
EXPORTING TO MORE THAN 83 COUNTRIES
HAS SUCCEEDED IN BECOMING
ONE OF THE 100 FASTEST
GROWING COMPANIES IN TURKEY



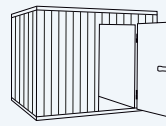
COLD ROOM PANELS



COLD ROOM DOORS



COOLING SYSTEM



MODULAR COLD ROOMS



STAINLESS STEEL COUNTERS



ABOUT US

Our company, serving in the Industrial Cooling Sector, has been in the sector since 1995 with ventilation, air conditioning, industrial stainless steel equipment, hygienic and cold room panels manufacturing and contracting works.

Our company, which continues its production according to national and international standards, has CE, TSE-HYB-212, TSE-HYB-258, ISO 9001:2008, ISO 9001:2008, TSEK certificates.

With its past and experience in the sector, it has undertaken serious projects both domestically and abroad, obtaining numerous references. Our company, taking into account the rapidly changing economic and technological trends, has set itself the goal of becoming a world-leading company in the cooling sector with the strength it receives from our solution partners.

The export success we have shown in recent years and the export awards we have received are indicators of how close we are to this goal.

OUR VISION

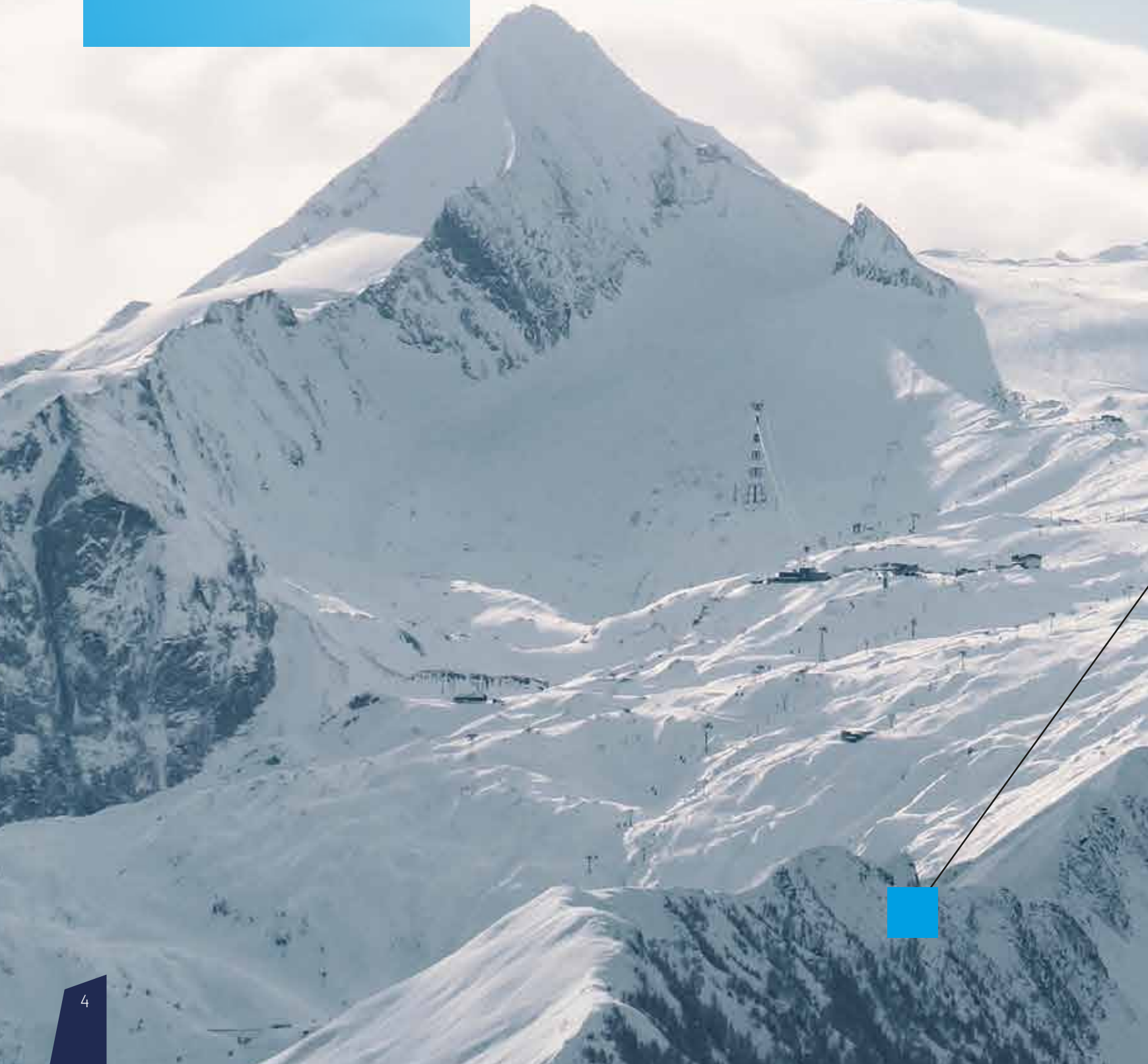
While effectively and efficiently meeting the needs of the sector and customers we are in with the service and product quality it offers, it is to be the world's leading Industrial Cooling company that produces beneficial added values for nature and future generations.



OUR MISSION

By closely following the developing technology and innovations it brings in its sector, it is to produce all the products it manufactures with high quality and efficiency and to bring them together with the service recipient.

ALWAYS STRIVING FOR GREATER HEIGHTS IN QUALITY AND TECHNOLOGY



KORKMAZ
industry



30TH
YEAR



5000
PROJECT



83
COUNTRIES



7
CONTINENT

1995

Our company, operating in the Ventilation and Metal Processing sector, was established in Istanbul.

2004

Our company, which moved to 4 September Industrial Zone in Sivas, has expanded its product range by adding natural gas chimneys and water tanks to the production of ventilation equipment in response to the increasing use of natural gas in our country.

2008

With its growing production capacity, our company acquired its own factory space and moved to the Sivas Organized Industrial Zone, further expanding its product portfolio to include the production of industrial stainless steel kitchen and hospital equipment.

2010

Between 2010 and 2012, we continued to grow by carrying out production and assembly projects in various facilities such as shopping malls, hotels, business centres, hospitals, schools, restaurants and fast-foods with our new products.

2012

In 2012, with the 'In Life and Beyond' project, we benefited from government support to expand our facilities and purchase new machinery. Thanks to these machines and the expanded facilities, we streamlined our production process.

2013

With the growth in production, new machines and equipment were added to our facility, enabling us to begin manufacturing industrial refrigeration systems integrated with climate control and cold room equipment, as well as launching project implementations. This accelerated our growth, and we began exporting. Our staff numbers increased, reaching 235 employees, including both fixed production and field workers. As exports progressed, we continued to enhance our expertise by developing our activities in the installation and contracting of cold room panels, doors, and cooling systems, further distinguishing ourselves in the market

2014

Our efforts towards institutionalization have been successfully completed. Until 2021, our initiatives to enhance growth and brand recognition continued effectively. These efforts further strengthened our company and solidified the institutionalization process.

2021

Our efforts towards institutionalization have been successfully completed. Until 2021, our initiatives to enhance growth and brand recognition continued effectively. These efforts further strengthened our company and solidified the institutionalization process.

2025

Our company has become an enthusiastic and forward-thinking business that closely follows industry developments by increasing its knowledge, experience, capabilities, brand recognition, and operational efficiency. On this journey, we have not only shaped our own path by prioritizing production and embracing investments and innovative approaches, but also aimed to enhance the competitive edge of our business partners. We are continuously evolving and looking toward the future.

OUR PRODUCTION AND QUALITY JOURNEY

ALWAYS FORWARD

**WITH OUR CUSTOMER
SATISFACTION-FOCUSED
SERVICE APPROACH**

PRODUCTION AND SHIPMENT AREA







INDUSTRIAL COLD ROOM PANEL

Korkmaz Panel, with its dynamic, young, and experienced team, is among the leading companies in global panel production, maintaining a strong commitment to quality. Our company has a daily production capacity of 1000 m² of panels, manufacturing various sizes and dimensions on presses measuring 13 meters in length with a pressure capacity of 600 tons. Our panels feature superior sealing properties due to their interlocking design. Our corner panels, 'T' panels, and narrow panels are among our exclusive productions.

For the panel surface material, POLY, PVC, Cr-Ni, and GALVANIZED sheet metal can be used. Our cold room panels are produced by injecting 42 (+/-2) kg/m³ density polyurethane foam between 0.50 mm sheets on both surfaces, forming interlocking panels. Our panels are manufactured to meet the B2 fire resistance standard by default, with the option to produce them according to the B1 fire resistance standard upon request.

Depending on their thickness, the panels are kept in 600-ton presses for a minimum of 30 minutes and a maximum of 90 minutes until their reactions are fully completed.



CORRUGATED PANEL

It is a type of cold room panel with grooves (waterways) on both surfaces. They are interlocking locked panels produced by injecting 42 (+/-2) kg/m³ density polyurethane foam between 0.50 mm sheet metal.

It can also be produced without lock upon request. Poly, PVC, and Cr-Ni sheet surface options are available. The panels can be produced in thicknesses of 50, 60, 80, 100, 120, 150, 180, and 200 mm

FLOOR PANEL

Our production consists of interlocking panels with a Plywood top surface and a poly sheet bottom surface, injected with 42 (+/-2) density polyurethane. Panel thicknesses are 50, 60, 80, 100, 120, 150, 180, 200 mm, and the width is 1110 mm.

Floor panels have a distributed load-bearing capacity of 2000 kg/m². Optionally, they can be produced using non-slip Cr-Ni coated sheet metal on plywood on the surface. When necessary, the distributed load capacity can be increased to 4000 kg/m².



NARROW PANEL

Thanks to our 30 cm, 40 cm, 50 cm standard narrow panels, our cold storage rooms allow assembly without any waste or cutting on the panels.

Production can be made in thicknesses of 5-6-8-10-12-15-18-20 cm with locked or unlocked options.



Intensity



Fireproof



Heat Insulation



Water, Moisture
Resistant



Sound Insulation



Easy Assembly

CORNER PANEL

- Provides ease of assembly.
- Eliminates the need for cutting the panel to achieve the correct dimensions, a common issue encountered during installation.
- Allows for corner column turns to be securely locked using the reverse corner panel.
- Panels can be produced as corrugated or flat upon request.
- Standard production is according to the B2 fire resistance class, but can also be produced according to the B1 fire resistance class upon preference.



PHYSICAL FEATURES

PANEL THICKNESS (MM)	INNER DIMENSION (MM)	OUTER DIMENSION (MM)
60	150*150	210*210
80	150*150	230*230
100	150*150	250*250
120	150*150	270*270
150	150*150	300*300
180	150*150	330*330
200	150*150	350*350

GENERAL FEATURES

FEATURES	VALUES
PANEL THICKNESS (MM)	60 – 80 – 100 – 120 – 150 – 180 – 200
PANEL DENSITY	42 (+/-2) kg/m ³
SHEET COATING TYPES	Polyester – PVC – CrNi
COLOR	RAL 9002
PATTERN	CORRUGATED - FLAT
INSULATION	POLYURETHANE



T PANEL

It is a specially designed product that connects rooms with different or the same panel thicknesses, providing ease of installation without losing insulation value. It provides an aesthetic appearance as no extra accessories and consumables are required in room combinations.



Intensity



Fireproof



Heat Insulation



Water, Moisture Resistant



Sound Insulation



Easy Assembly



FLAT PANEL

Flat cold room panels are hygienic panels produced without any treatment on the sheet surface. It is generally preferred in clean rooms and areas requiring hygiene.

Production can be done with or without locking.



DECORATIVE PANEL

It provides an aesthetic appearance as no extra accessories and consumables are required in room combinations.



Intensity



Fireproof



Heat Insulation



Water, Moisture
Resistant



Sound Insulation



Easy Assembly



The Way to Preserve
Freshness and Health
in the World

KORKMAZ
industry

KORKMAZ PANEL IECOOLING



COLD ROOM DOORS

Our extensive door production line operates at full capacity, producing 500 doors per month. The doors, manufactured using high-pressure presses, feature polyurethane insulation, ensuring maximum thermal efficiency.

For cold and frozen storage, we offer standard production of swing doors and sliding doors. Additionally, we produce service doors, office doors, and emergency exit doors. We also provide custom-made doors in various models and designs, tailored to specific needs and requirements. As with all our production processes, our company remains open to innovations in this area.

Door surface materials can be produced in Poly, PVC, Cr-Ni, and galvanized sheet.



PVC FRAME HINGED DOOR

Used in cold and frozen storage rooms. As it has a hinged lock, they are doors that can be opened and closed quickly. It can also be produced in special designs and various sizes. The frame thickness can be adjusted according to the panel thickness or construction wall thickness. The hinge system is of the elevating or adjustable type. The door has the feature of being able to be opened from inside and outside.

PANEL MOUNT STANDARD DOOR

Impact locking doors used in cold and freezer rooms are panel-mounted doors designed for quick opening and closing. They are the most commonly preferred storage doors due to their ease of installation. During installation, the doors can be easily mounted by locking onto the panels on the left and right sides without any cutting. We can be produced as panel-mounted doors up to a width of max 90 cm.



STANDARD DOOR

Used in cold and frozen storage rooms. As it has a hinged lock, they are doors that can be opened and closed quickly. They are the most preferred storage doors. Standard production is 90 x 190 cm in size.

However; It can also be produced in special designs and various sizes.



Intensity



Fireproof



Heat Insulation



Water, Moisture Resistant



Sound Insulation



Easy Assembly

ALUMINUM EMBOSSED PVC HINGED DOOR

It is used in cold and freezer rooms and is especially preferred in European countries and the United States. The door leaf surface is made of embossed aluminum.

The frame is produced from PVC, but upon request, it can be covered with embossed aluminum. The door hinges and lock are made of stainless steel (inox).



INDUSTRIAL HINGED DOOR

Our impact doors, designed for fast and secure passage in cold or freezer environments, offer customized design options. Manufactured with an adjustable frame and reinforced hinge system, they prioritize durability. These doors provide a practical solution to enhance the efficiency of your operations.

MONORAIL HINGED DOOR

Generally used in slaughterhouses and meat processing facilities, connected to monorail lines, to ensure the uninterrupted operation of the monorail flow. It can be produced in 2 different ways as PVC or Aluminum. There are support sheets inside the frame for all accessories on the door frames. Production can be made in desired dimensions and sizes.



Intensity



Fireproof



Heat Insulation

Water, Moisture
Resistant

Sound Insulation



Easy Assembly



SLIDING DOOR

These are sliding doors that can open to the right or left over wide ranges. They are used in cold and frozen storage rooms and can be produced in various sizes. The standard surface options are Poly, PVC, and Cr-Ni, with different color choices available for the door leaf.

- **Door Leaf:** No wood material is used. Polyurethane with a density of 40 (+/-2) is injected between two metal sheets. Door thickness is 92 mm for normal cold storage rooms and 120 mm for freezer rooms.
- **Hanging Equipment:** The supporting rail, rollers, handles, and necessary accessories are made of composite material and stainless steel.
- **Surface Sheet:** Standard production includes PVC sheets on both sides of the door leaf. Upon request, the surface can be made of polyester-painted sheet or Cr-Ni steel.
- **Door Frame:** The outer frame is made of special PVC, and the inner frame is aluminum.
- **Door Gasket:** For normal storage rooms, the door leaf is surrounded by a single row of special rubber gaskets. Frozen storage doors have a replaceable heating element in the frame, which can be easily changed when necessary.
- **Dimensions:** Custom production can be made in any desired size



MONORAIL SLIDING DOOR

Monorail system doors are specially designed to ensure the continuous flow of products in cold storage rooms and meat processing facilities. These doors are made from durable materials such as PVC or aluminum and can be produced in various sizes and dimensions. Support plates inside the doors securely hold all accessories in place. To prevent cold air loss, resistance or double gasket options are available.



Intensity



Fireproof



Heat Insulation



Water, Moisture
Resistant



Sound Insulation



Easy Assembly

DOUBLE WING SLIDING DOOR

Sliding doors are rail-mounted doors that can open to the right or left over wide ranges. They are suitable for use in freezer or cold room facilities and can be produced in various sizes.



Double-leaf sliding doors are a preferred specialized product for rooms with limited space, offering customized dimensions as needed.

- **Door Leaf:** No wood material is used. Polyurethane with a density of 40 (+/-2) is injected between two metal sheets. Door thickness is 92 mm for normal cold storage rooms and 120 mm for frozen storage rooms.
- **Hanging Equipment:** The supporting rail, rollers, handles, and necessary accessories are made of composite material and stainless steel.
- **Surface Sheet:** Standard production includes PVC sheets on both sides of the door leaf. Upon request, the surface can be made of polyester-painted sheet or Cr-Ni steel.
- **Door Frame:** The outer frame is made of special PVC, and the inner frame is aluminum.
- **Door Gasket:** For normal storage rooms, the door leaf is surrounded by a single row of special rubber gaskets. Frozen storage doors have a replaceable heating element in the frame, which can be easily changed when necessary.
- **Dimensions:** Custom production can be made in any desired size.



Intensity



Fireproof



Heat Insulation

Water, Moisture
Resistant

Sound Insulation



Easy Assembly



SINGLE - DOUBLE WING EMERGENCY EXIT DOOR

Used for fast transfers and exits or at evacuation exit points, can be opened single or double-sided. Production can be made in various sizes.

OFFICE DOOR

Its elegant and functional design ensures long-lasting use. It is generally used for office doors installed inside cold storage facilities. It can be produced in various sizes.



DOUBLE WING HINGED COLD ROOM DOOR

It is used in cold storage rooms and is a high-quality, specialized product. Ideal for rooms that require a sliding door application but lack sufficient space. It can be produced in various sizes



Intensity



Fireproof



Heat Insulation



Water, Moisture
Resistant



Sound Insulation



Easy Assembly

DOUBLE WING FLIP-FLAP (SERVICE) DOOR

Used for quick passage between storage areas. It is double-winged and produced to be mounted on panel or wall.

The wing is 40 mm thick, can be opened 180 degrees in both directions and can always remain open when necessary. Frame profiles are aluminum. Production can be made in various sizes.



SINGLE WING FLIP-FLAP (SERVICE) DOOR

Used for quick passage between storage areas. Produced to be mounted on panel or wall.

The wing is 40 mm thick, can be opened 180 degrees and can always remain open when necessary. The frame profile is aluminum. Production can be made in various sizes.

ICE CREAM AND SPECIAL ISOTHERMAL DOORS

Used in frozen storage rooms. As it has a hinged lock, they are doors that can be opened and closed quickly. It can be produced in special designs and various sizes. The frame thickness can be adjusted according to the panel thickness. The hinge system is of the elevating or adjustable type.



Intensity



Fireproof



Heat Insulation



Water, Moisture Resistant



Sound Insulation



Easy Assembly



MODULAR COLD ROOMS AND CABINETS

MODULAR COLD ROOMS AND CABINETS



Modular cold storage rooms are compact, prefabricated cold room that allow food, chemical, and medical products to be preserved for long periods without spoiling, thus extending their shelf life. The components are designed to be easily assembled and disassembled, making them portable and expandable based on needs.

These modular rooms feature custom-made corner, narrow, and wall panels that lock together without the need for cutting. They are produced and delivered in predetermined dimensions and specifications, packaged for convenience. Installation begins with the floor panels. The floor, walls, and ceiling are secured using hygienic polyurethane-filled plastic, fixed by screws in designated mounting points without the need for additional accessories. The ceiling is joined with an upper-section plastic application, providing a load-bearing capacity of 250 kg per square meter.

Our cooling units, which are very easy to install, can be plugged in and immediately operational with suitable electrical connections (220V / 380V).

The doors are equipped with resistance and can be opened from both the inside and outside. The shelves used in our modular rooms come in perforated and solid options and are made from 304-grade stainless steel. Perforated shelves allow for 80% air circulation, ensuring even cooling of products, and have an average load capacity of 200 kg. Shelves can be customized in different intervals and heights according to preference. In addition to standard sizes, custom dimensions can also be produced. Production can be made with POLY, PVC and Cr-Ni sheet surface options according to preference.

Our products are manufactured in compliance with European standards, without using any materials made in China.



Intensity



Fireproof



Heat Insulation



Water, Moisture Resistant



Sound Insulation



Easy Assembly

MODULAR ROOM



GLASS MODULAR ROOM



MONO CABINET



ISOTHERMAL CABINET



MODULAR CONTAINER
DELICATESSEN



SMALL ISOTHERMAL CABINET



Intensity



Fireproof



Heat Insulation



Water, Moisture
Resistant



Sound Insulation



Easy Assembly



INDUSTRIAL COOLING SYSTEM

As Korkmaz cooling systems, we are excited to share our knowledge and experience with you, our valued customers. Based on years of extensive experience, our solid and reliable staff, with a wide machine park, has adopted the vision of producing high-tech air conditioning devices. The unchanging principles of our air conditioning devices are to provide our customers with the best products and services with a quality, service, reliable, innovative and pioneering approach in every aspect. Keeping environmental awareness at the forefront, it offers environmentally friendly and low energy consumption products.

CENTRAL SYSTEM COOLING

- It features semi-hermetic, scroll, or screw compressors.
- It is produced with either air-cooled or water-cooled condensers.
- Delivered ready for installation with the electrical panel and all automatic control components.
- The indoor and outdoor units are delivered with nitrogen charge.
- It has an electrostatically painted galvanized steel chassis.
- Equipped with a compressor system that engages in stages.
- Offers a wide range of capacity options.
- Condenser and evaporator selections are made according to capacity.



AVANTAJLARI	TEKNİK ÖZELLİKLERİ
✓ Compliant with standards	✓ Electrostatic powder-coated cabinet
✓ High efficiency	✓ Low-high voltage protection relay
✓ Providing high electricity savings	✓ Thermal magnetic switch
✓ Suitable for Solar Energy Systems (SES) projects	✓ Contactor in three-phase single-phase compressors
✓ Durable cabinet suitable for outdoor environments	✓ Crankcase heater
✓ Minimum noise level	✓ Copper pipe aluminum finned condenser
✓ Reliable quality equipment	✓ Fan speed control
✓ Complete product	✓ Receiver
✓ Easy installation and assembly	✓ Dryer filter
✓ Easy maintenance	✓ Liquid sight glass
✓ Product variety	✓ Liquid flow control solenoid
✓ Special model design possibility	✓ Service and maintenance valve on liquid line
✓ Wide product range	✓ Low-High pressure switch
✓ Compliance with HACCP standards	✓ Oil splatter and accumulator



SHOCK COOLING DEVICES

- Shock rooms are produced in compliance with SC4 conditions, featuring two-stage and screw compressors.
- The device comes with a remote control panel and can be designed to accommodate inverter technology.
- Dual-circuit shock evaporators are available in both floor and ceiling types.
- The fans are equipped with heaters, minimizing the risk of icing.
- Evaporator defrost heaters are redundant and come with cassette systems suitable for outdoor conditions.
- It complies with CE standards and is delivered with nitrogen charge.
- It is shipped ready for installation with an electrical panel and automatic control equipment.



**THE FRESHNESS
OF YOUR
PRODUCTS
IS SAFE
WITH KORKMAZ**



Intensity



Fireproof



Heat Insulation

Water, Moisture
Resistant

Sound Insulation



Easy Assembly

INDUSTRIAL SPLIT COOLING DEVICE

- Manufactured in compliance with the conditions of cold and frozen storage rooms (SC1, SC2, SC3).
- Equipped with hermetic, semi-hermetic, and scroll compressors with air-cooled condensers.
- Delivered with a standard digital control panel (XLR170).
- The cabinet is designed to withstand outdoor weather conditions.
- Compliant with European Union standards and manufactured with CE certification.
- The outdoor unit is delivered with nitrogen charging.
- Supplied ready for installation, complete with an electrical panel and all automatic control components.
- **No Chinese-made products are used in our equipment. Only European-made products are utilized.**



ADVANTAGES

- ✓ Compliant with standards
- ✓ High efficiency
- ✓ Providing high electricity savings
- ✓ Suitable for Solar Energy Systems (SES) projects
- ✓ Durable cabinet suitable for outdoor environments
- ✓ Minimum noise level
- ✓ Reliable quality equipment
- ✓ Full group
- ✓ Easy installation and assembly
- ✓ Easy maintenance
- ✓ Product variety
- ✓ Special model design possibility
- ✓ Wide product range
- ✓ Compliance with HACCP standards



Intensity



Fireproof



Heat Insulation



Water, Moisture Resistant



Sound Insulation



Easy Assembly

MONOBLOC DEVICES

- Monoblock cooling units are manufactured for Positive (+5°C/-5°C) and Negative (-18°C/-25°C) operating ranges.
- Installation is very simple; it is mounted to cold rooms and only needs to be plugged in. Although typically used with 220V household sockets, it can also be configured for 380V industrial sockets upon request.
- Package-type split cooling units developed for small cold rooms are delivered ready for use.
- We offer ceiling-type or wall-type models depending on the features of cold and frozen rooms.
- Delivered compactly with the electrical panel and all control elements included.
- Operates at low noise levels during use.
- Can operate outdoors without any issues.
- Equipped with a hermetic compressor and air-cooled condenser.
- Has a defrost feature.
- Available with R404 and R449 gas options.



TECHNICAL FEATURES

- ✓ Electrostatic powder-coated cabinet
- ✓ Low-high voltage protection relay
- ✓ Thermal magnetic circuit breaker
- ✓ Contactor in three-phase and single-phase compressors
- ✓ Crankcase heater
- ✓ Copper tube, aluminum finned condenser
- ✓ Fan speed control
- ✓ Receiver
- ✓ Dryer filter
- ✓ Liquid sight glass
- ✓ Liquid flow control solenoid
- ✓ Service and maintenance valve on the liquid line
- ✓ Low-High pressure switch
- ✓ Oil separator and accumulator



Intensity



Fireproof



Heat Insulation

Water, Moisture
Resistant

Sound Insulation



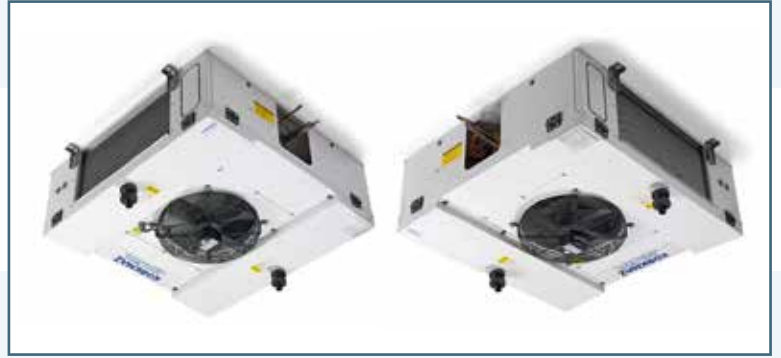
Easy Assembly

EVAPORATORS

WALL TYPE



DOUBLE BLOWING CEILING TYPE



- Our wall-type cold room evaporators are designed to provide high efficiency and are produced with 4-6-8-10 mm fin spacing.
- It has fans that will ensure homogeneous distribution of room temperature.
- Designed to work with different refrigerants.
- It has an electrostatic painted galvanized cabinet and can be produced in stainless steel upon request.
- To prevent it from being affected by products with high acid and pH values, the battery surfaces of the evaporators can be coated with high-quality epoxy paint.
- Performs defrost application quickly and homogeneously.
- While our evaporators are being produced, expansion valves are installed and made ready for shipment.
- Designed to be easy and accessible for installation and maintenance work.

Our double-blow ceiling-type evaporators are typically used in positive temperature working areas.

SLIM AIR TYPE



- Used to prevent direct exposure of cold air to products in cases where this is undesirable, helping to avoid negative effects like discoloration and crystallization.
- Our Slim Air type cold room evaporators are designed and manufactured with fin spacings of 4-6-8-10 mm to ensure high efficiency.
- They feature fans that provide a homogeneous distribution of room temperature.
- Designed to operate with different refrigerants.
- Equipped with an electrostatically painted galvanized cabinet, and optionally can be produced from stainless steel.
- To prevent the effects of products with high acid and pH values, the surfaces of the evaporator coils can be coated with high-quality epoxy paint.
- Capable of performing the defrost process quickly and uniformly.
- Our evaporators are made ready for shipment by installing expansion valves.
- Designed to be easily accessible for assembly and maintenance work.



Intensity



Fireproof



Heat Insulation



Water, Moisture Resistant



Sound Insulation



Easy Assembly

STANDARD AND OPTIONAL FEATURES WE USE IN OUR DEVICES

Industrial cooling system that we manufacture are meticulously designed to ensure the highest efficiency and durability. The standard features offered in our devices provide long-lasting use and energy savings, while optional features offer customization options to meet your specific needs.

	STANDARD	OPTIONAL
Cabinet	✓	
Oil Separator	✓	
Fan Speed Control		✓
Sound Insulation	✓	
Vibration Sensor (Compressor Inlet-Outlet)	✓	
High Pressure Sensor	✓	
Low Pressure Sensor	✓	
Fan Pressure Sensor		✓
Manometer (High and Low Pressure)		✓
Sight Glass	✓	
Vibration Absorber	✓	
Drier	✓	
Solenoid Valve	✓	
Circuit Breaker - Electrical Box	✓	
Liquid Tank	✓	
Phase Protection Relay	✓	
Fault Lamp		✓
Pako Switch		✓

The equipment used in the industrial cooling units we produce has been selected in full compliance with European standards. We prioritize quality and safety in our products; therefore, none of our devices contain materials made in China. Every product we offer to our customers is made from high-quality components that provide durability, efficiency, and reliability. As Korkmaz Panel, we are committed to providing solutions that meet the highest standards in the industry



Intensity



Fireproof



Heat Insulation

Water, Moisture
Resistant

Sound Insulation



Easy Assembly



INDUSTRIAL STAINLESS STEEL COUNTERS

With our machinery fleet, which includes CNC, Punch, Press Brake, Guillotine Shear, C Press, and Automatic Bending Machines, we provide services in the field of industrial metal processing. At our company, we contribute to the industry's development by producing various metal products such as Cr-Ni workbenches, shelves, cooling cabinets, single-piece door wings, and cold storage corner accessories. We continue full-capacity production in harmony with technological advancements.

INDUSTRIAL STAINLESS STEEL COUNTERS

- Products are manufactured from 304 quality stainless steel.
- Produced in disassembled and assembled form according to demand.
- Generally preferred in cold storage facilities and industrial plants.
- Can be made in desired dimensions and thickness according to the purpose of use.
- Products are suitable for all kinds of hygienic washing.



LAMB CABINET



LAMB CABINET



LAMB CABINET



DISHWASHING COUNTER WITH
SINK AND LOWER SHELF



WORK COUNTER WITH LOWER
SHELF



LOCKER



PERFORATED STACKING
SHELF



NON-PERFORATED STACKING
SHELF



WHEELED TRANSPORT
TROLLEY



MEAT HANGING TROLLEY



WORK COUNTER WITH BACK
AND LOWER SHELF



WORK COUNTER WITH
BUTCHER BLOCK



FISH CLEANING COUNTER



TEA PREPARATION-PULP
STRAINING WORK COUNTER
WITH LID



L-SHAPED WORK AND
PREPARATION COUNTER



CHEESE STRAINING COUNTER



MULTI-PURPOSE TRANSPORT
TROLLEY



MULTIPLE WORK COUNTER



WORK COUNTER WITH SINK
AND LID



CAULDRON WASHING
COUNTER



MILK STRAINING COUNTER



TRAY TRANSPORT TROLLEY



RAMP

CENTRIFUGAL HUMIDIFICATION

Automatic humidifiers controlled by an automation system are often used to maintain quality and maintain the importance of moisture content. These devices help refrigeration systems by providing heat exchange with vapor molecules while controlling the humidity level.

These devices are used to maintain the quality and moisture content of stored products by preventing moisture loss, especially in fresh food storage and cold storage rooms conditioned at positive temperatures. By keeping the humidity level of cold rooms at a certain level, it also contributes to the cooling process thanks to the heat exchange that occurs during evaporation.



- ✓ Easy Installation
- ✓ Various space utilization (on the wall)
- ✓ Easy to carry
- ✓ Seamless simple construction (high durability).
- ✓ Good for chemical disinfection ionization and deodorization.
- ✓ Easy adaptation to automation system.



PVC STRIP CURTAIN

PVC Strip Door Systems fully comply with the Turkish Food Codex and relevant regulations. They offer ideal solutions for food establishments that have been restructured in accordance with Decree Law No. 560 on the production, consumption, and inspection of food, as well as the associated legislation. PVC Door Systems are recommended, especially for businesses in the food sector, to ensure a healthy and clean environment. We offer various models specifically designed for use in cold and freezer storage rooms.

USAGE AREAS

- ✓ Main doors inside or outside the factory
- ✓ At personnel entrance and exit gates
- ✓ At loading doors
- ✓ Kitchen Doors
- ✓ At the doors of the paint shop
- ✓ Welding and steam departments
- ✓ In production departments
- ✓ In cold stores and high freezer room entrances as well as in conveyor systems
- ✓ Especially recommended for a healthy and clean environment in food sector enterprises.

PURPOSE OF USE

- ✓ Increases economic efficiency with energy savings.
- ✓ Protects the business from birds, flies, insects and all flying pests.
- ✓ Reduces odor, gas, dust, etc. polluting the air.
- ✓ Provides hygiene in the room.
- ✓ Easy to install. It cuts the welding light which is harmful to the eyes in welding rooms.
- ✓ Light permeable for a safer working area.
- ✓ Cuts machine noise.
- ✓ Requires minimum maintenance.



HYGIENIC ACCESSORIES

Hygienic cold room accessories have a design that prioritizes quality and hygiene in cold rooms. They are products used to provide the desired hygienic environment and meet HACCP requirements, especially in the product processing and storage areas of food businesses.



ANGLED INNER AND
OUTER PROFILES



U PROFILES



CEILING SUSPENSION
PROFILE



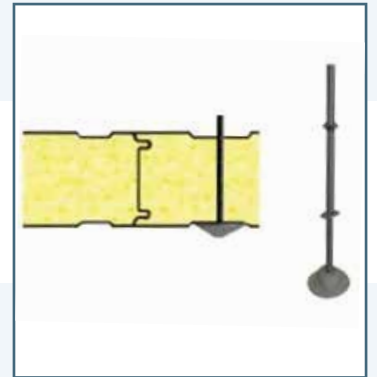
CORNER CONNECTOR



HYGIENIC OUTER
PROFILE



HYGIENIC OUTER PROFILE



CEILING SUSPENSION
APPARATUS

PANEL MOUNTING ACCESSORIES

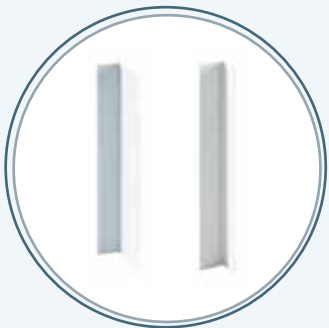
It is used to ensure airtightness and create a hygienic environment in the areas where the floor, wall, and ceiling panels join. Depending on the application needs, it is produced as galvanized with hygienic, Cr-Ni, PVC, or POLY coatings. The profiles and accessories used include the following:

- Angled inner - outer profiles,
- Corner connectors,
- Straight or Z profiles,
- U profiles for panel positioning,
- Ceiling suspension profiles and apparatus,
- Aluminum corner brackets



U ACCESSORY

The U accessory is produced with a thickness of 0.50 mm as standard. The U profile is only used on the floor. When cold room panels are placed in the floor, the U profile provides both durability and contributes to a stylish and hygienic appearance. It facilitates panel installation. Available in POLY, PVC and Cr-Ni options. Dimensions vary according to panel thickness



INSIDE CORNER L ACCESSORY

L inner accessory is produced in 0.50 mm thickness as standard. Available in POLY, PVC and Cr-Ni. It is used in interior corner joints to provide a more aesthetic appearance and to maximize thermal insulation.

OUTER CORNER ACCESSORY

L external accessory is produced in standard 0.50 mm thickness. Dimensions may vary depending on the project. Available in POLY, PVC and CR-NI. It is used in exterior corner joints to provide a more aesthetic appearance and to maximize thermal insulation.



CEILING HANGER PROFILE

Ceiling hanger profiles made of aluminum are used to divide the room area in order to prevent sagging in long ceiling panels by taking support from the constructed ceiling with the help of square nuts and rods. The ceiling suspension profile used is 120 mm wide and RAL 9002 electrostatic painted.

LED LIGHTING

The most efficient lighting method for cold storage rooms is led lighting. Thanks to the led lighting systems used in cold rooms, we prevent the heat source caused by lighting in the room. Led lighting fixtures can be used for many years without any problems in a wide temperature range



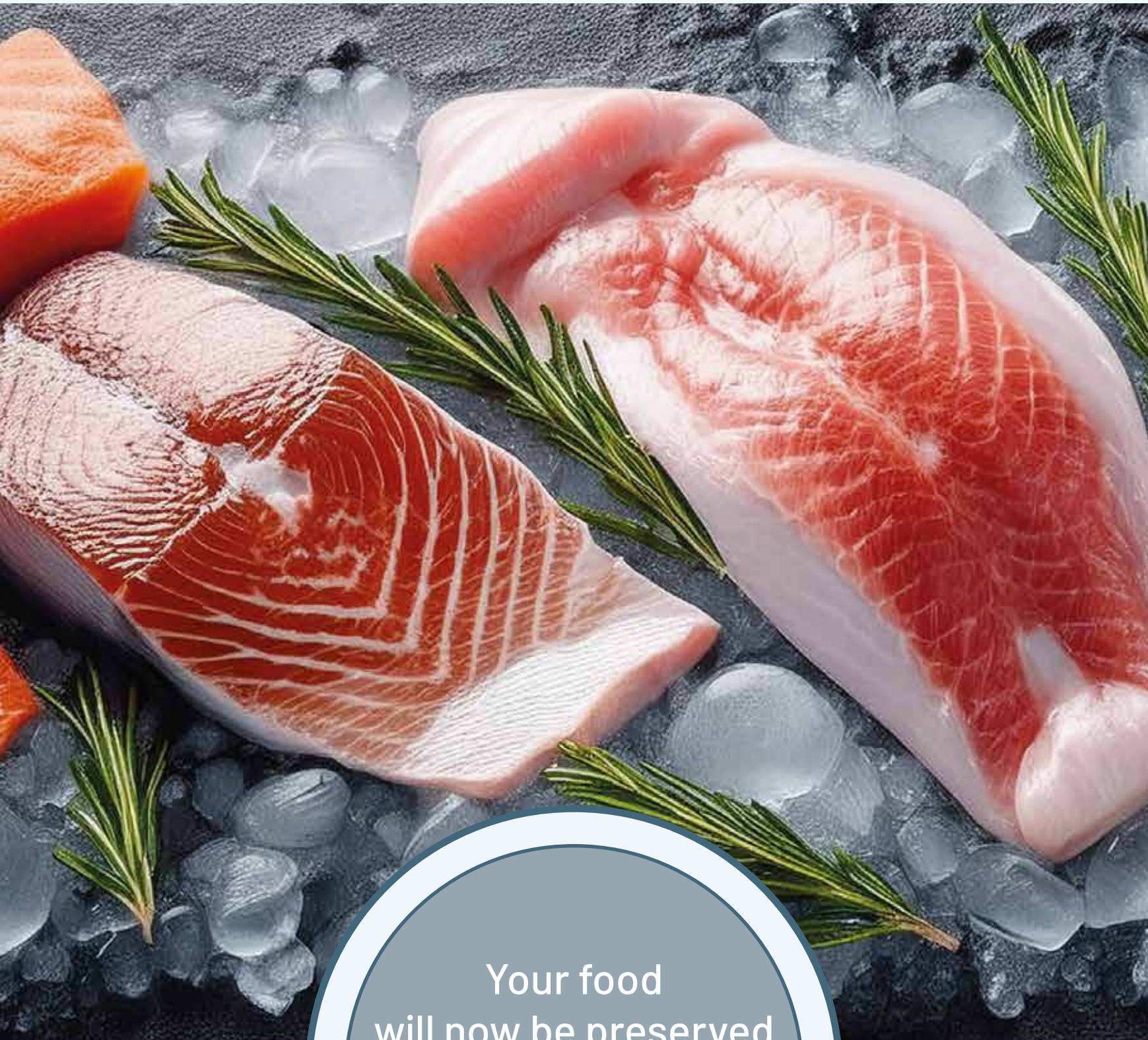
GENERAL INFORMATION

Nowadays, the bulb life of light sources commonly used in industrial applications is approximately 6,000-12,000 hours. This figure is over 50,000 hours in led systems.

50 Watt, 100 Watt and 200 Watt are available in 3 different forms. It is easy to change in case of failure.

KORKMAZ LED FEATURES

- More than 50.000 hours working life
- Very low energy consumption.
- Works directly with 220 V.
- Maintenance-free and hardly gives off any heat.
- No ultraviolet and infrared rays, so it is safer to use in the food industry and with photosensitive materials.
- It can even operate in shock (blast freezer) at -40°C . It can be used indoors and outdoors as it can work in both wet and dry environments.
- Its environmentally friendly structure is free of heavy metals such as mercury and halogen gases



Your food
will now be preserved
at the required
values under
your control.

CERTIFICATES





REFERENCES





OUR PROJECTS





YOU CAN'T REACH THIS ENVIRONMENT
IN 10 MINUTES BUT

**YOU CAN SET UP THIS COLD
ENVIRONMENT IN 10 MINUTES.**

MAXIMUM EFFICIENCY

IN THE TOUGHEST CONDITIONS



KORKMAZ
industry

KORKMAZ PANEL  **IECOOLING**

OUR CONTACT INFORMATION



- +90 (346) 218 11 87
- +90 (531) 471 04 34
- +90 (346) 218 13 50
- export@iecooling.com
- www.korkmazpanel.com
- Organize Sanayi Bölgesi 2.Kısım 4.Cad.
9. Sk. No:11 Sivas/TÜRKİYE

"Those Who Prefer Quality Choose Korkmaz"